

# Ticket to Ride

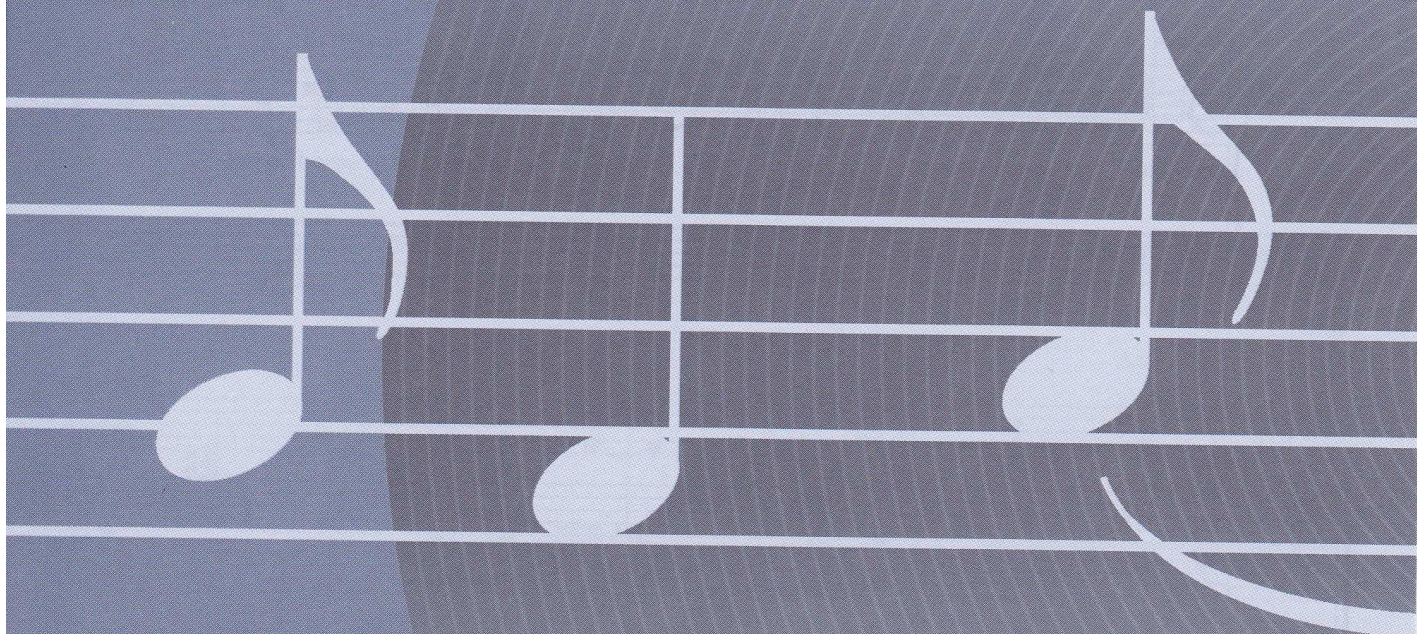
(Medley Featuring Songs of The Beatles)

Ticket to Ride • Penny Lane • Drive My Car

WORDS AND MUSIC BY  
**JOHN LENNON AND PAUL McCARTNEY**

ARRANGED BY **AUDREY SNYDER**

AVAILABLE FOR SATB, SAB AND 2-PART



08201842  
ShowTrax  
CD

 **HAL•LEONARD®**  
CORPORATION

7777 W. BLUEMOUND RD. P.O. BOX 13819 MILWAUKEE, WI 53213

Recorded by THE BEATLES

# Ticket to Ride

(Medley Featuring Songs of The Beatles)

Ticket to Ride • Penny Lane • Drive My Car

For SATB\* and Piano

Performance Time: Approx. 3:00

Arranged by  
**AUDREY SNYDER**

**TICKET TO RIDE**  
Words and Music by JOHN LENNON  
and PAUL McCARTNEY

**Moderate Rock** (♩ = 118)

Soprano Alto  
Tenor Bass  
Piano

Unis. *mf*

*E<sub>b</sub>(add2)*  
*mf*

I think I'm gon-na be sad, —  
I think I'm gon-na be sad, —

day, — yeah! — The  
I think it's to - day, — yeah! — mel. The

4

\*Available for SATB, SAB and 2-Part  
ShowTrax CD available

**DO NOT  
PHOTOCOPY**



girl that's driv-in' me mad, —

girl that's driv-in' me mad — is go-in' a - way. —

Fm

7

11

She's got a tick - et to ride, —

Bb Cm Ab

10

she's got a tick - et to ride, — she's got a tick - et to ride.

Cm Dbmaj7/Ab Cm

13

**PENNY LANE**  
 Words and Music by JOHN LENNON  
 and PAUL McCARTNEY

— but she don't care. — Pen - ny Lane: —

Bb Bbsus/F Bbsus Eb(add2) C C7

16.

19 Swing eighths (♩♩ =  $\overset{\frown}{\text{J}}\overset{\frown}{\text{J}}\overset{\frown}{\text{J}}$ )

— there is a bar - ber show - ing pho - to - graphs of ev - 'ry head.

F F/E F/D F/C Bb Gm7 Csus

*detached*

19

— he's had the plea - sure to know. — And all the

F F/E F/D F/C Fm7

21

peo-ple that come and go — stop and say, — "hel-lo."

Dm7(b5) Dbmaj7 Csus C

23

*mf* 27 On the cor-ner is a bank-er with a mo-tor-car; The lit-tle chil-

*mp*

Doot doot doot doot doot doot doot doot

Csus C F F/E F/D F/C Bb Gm7 Csus

26

- dren laugh at him be-hind his back.

*Unis. mf*

doot doot doot doot doot doot doot. And the bank-er nev-er wears a mac-

F F/E F/D F/C Fm7 Dm7(b5)

29

ver-y strange!\_ Pen-ny Lane\_

in the pour - ing rain,

*Dbmaj7* *Csus* *C* *Bb*

30 31 32

35 35 Unis.

is in my ears\_ and in my eyes,

*Eb* *Eb/G* *Ab*

35

*mel.* there be-neath the blue\_ sub - ur - ban skies\_ skies\_ skies\_.

*Eb* *Eb/G*

35 36 37

Unis. *f* 43

I sit. And mean - while back, Pen - ny Lane — is in my ears —

I sit. And mean - while back,

*Ab* *C* *F*

*f* 3

41

Unis.

and in my eyes, —

*F/A* *Bb* Cued notes straight eighths

44

Straight eighths (♩ = ♪♪)

*mel.* there be - neath the blue — sub - ur - ban skies. —

*F* *F/A* *Bb*

47

Unis. <sup>3</sup>

Pen-ny Lane. \_\_\_\_\_

Unis. <sub>3</sub>

Bb/D D7 Dm7/A D Am D

50

Detailed description: This block contains the musical score for the first system of 'Penny Lane'. It features a vocal line with a triplet of eighth notes in the treble clef and a corresponding triplet in the bass clef. Below the vocal lines is a piano accompaniment with a bass line and a treble line. The piano part includes a Bb/D chord and a series of chords: D7, Dm7/A, D, Am, and D. The measure number 50 is indicated at the bottom left.

**DRIVE MY CAR**  
 Words and Music by JOHN LENNON  
 and PAUL McCARTNEY

53

Asked a girl what she want - ed to be. — She said, "Ba - by,

D7sus G D7sus

53

Detailed description: This block contains the musical score for the second system of 'Drive My Car'. It features a vocal line with the lyrics 'Asked a girl what she want - ed to be. — She said, "Ba - by,'. Below the vocal lines is a piano accompaniment with a bass line and a treble line. The piano part includes D7sus, G, and D7sus chords. The measure number 53 is indicated at the bottom left.

can't you see? — I wan-na be fa-mous, a star of the screen.. But

G D7sus G

56

Detailed description: This block contains the musical score for the third system of 'Drive My Car'. It features a vocal line with the lyrics 'can't you see? — I wan-na be fa-mous, a star of the screen.. But'. Below the vocal lines is a piano accompaniment with a bass line and a treble line. The piano part includes G, D7sus, and G chords. The measure number 56 is indicated at the bottom left.

Copyright © 1965 Sony/ATV Songs LLC  
 Copyright Renewed

This arrangement Copyright © 2005 Sony/ATV Songs LLC  
 All Rights Administered by Sony/ATV Music Publishing, 8 Music Square West, Nashville, TN 37203  
 International Copyright Secured All Rights Reserved



61

you can do some - thing in be - tween: Ba - by, you can drive my car.

F2/A Bm G7

59

Yes, I'm gon - na be a star.

Unis.

Bm G7

62

Unis.

Ba - by, you can drive my car, and may - be I'll love you."

Unis.

Bm Bdim Am Dm D G

65

Beep, beep, mm beep, beep. Yeah. — “Yeah  
Unis.

A D G A

68

71  
ba - by, you can drive my car. — Yes, I'm gon - na be a star. —  
Unis.

Bm G7 Bm G7

71

Unis.  
Ba - by, you can drive my car, — and may - be I'll love. —  
Unis.

Bm Bdim Am Dm

74

— you.”\_                      Beep, beep, mm beep, beep.                      Yeah.—

D      G                      A                      D                      G

77

Beep, beep, mm beep, beep.      Yeah.—                      Beep, beep, mm beep, beep.

A                      Am7                      D                      G                      A                      Am7                      Mm

80

Beep, beep, mm beep, beep.      Yeah.—                      Beep, beep. Yeah!

Unis.                      Unis.

beep, beep,                      mm beep, beep.      Yeah.—

D                      N.C.

83